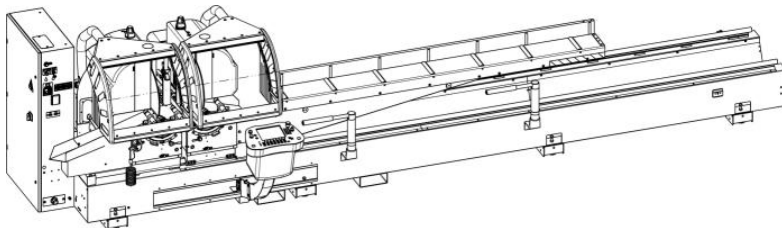


## BLITZ ALVA 550

Double-head sawing machine with motorised movement of the mobile head and pneumatic tilting of the  $\varnothing$  550 mm heads



Working cut	A	B	C	KG
m. 4	5700	2000	2010	1600 1660 vers. E
m. 5	6700	2000	2010	1900 1960 vers. E
m. 6,6	7340	2000	2010	2400 2460 vers. E

\* Total dimensions with mobile head roller table A + 3000  
(at max cutting length)

## BLITZ ALVA 550

Double-head sawing machine with motorised movement of the mobile head and pneumatic tilting of the  $\varnothing$  550 mm heads

### Technical characteristics

Head tilting from 22.5° external to 90° by pneumatic cylinders, with mechanical stops for intermediate angles

2 x tungsten carbide saw blades  $\varnothing$  550 mm with  $\varnothing$  32 mm hole

Hydraulic tungsten carbide saw blade feed (adjustable blade exit speed - quick return)

90° - 45° - 22.5° and intermediate angles obtained with stops located at the front of the machine and protection from chips

Integral safety kit around cutting zone

Horizontal (3) and vertical (2) pneumatic vices

Horizontal and vertical profile support surface in stainless steel

Mobile head roller table L=3000 mm

Atomised cutting lubrication kit

Direct motor - tungsten-carbide saw blade transmission

First head fixed, second head mobile with automatic positioning

Minimum cutting capacity between the two heads: 370 mm (can be reduced with dedicated software)

Maximum cutting capacity between the two heads: depending on version supplied (can be increased with dedicated software)

Electrical switchboard separated from the pneumatic one and with easy inspection

Set up for forced extraction of chips and fumes

Working pressure 7 bar

Real time control of functions by numerical control

Membrane-type control keyboard protected from dust and chips

Large size swarf collection box to allow easy collection

Set up to take conveyor belt for collecting offcuts and a motorised chips collection conveyor belt

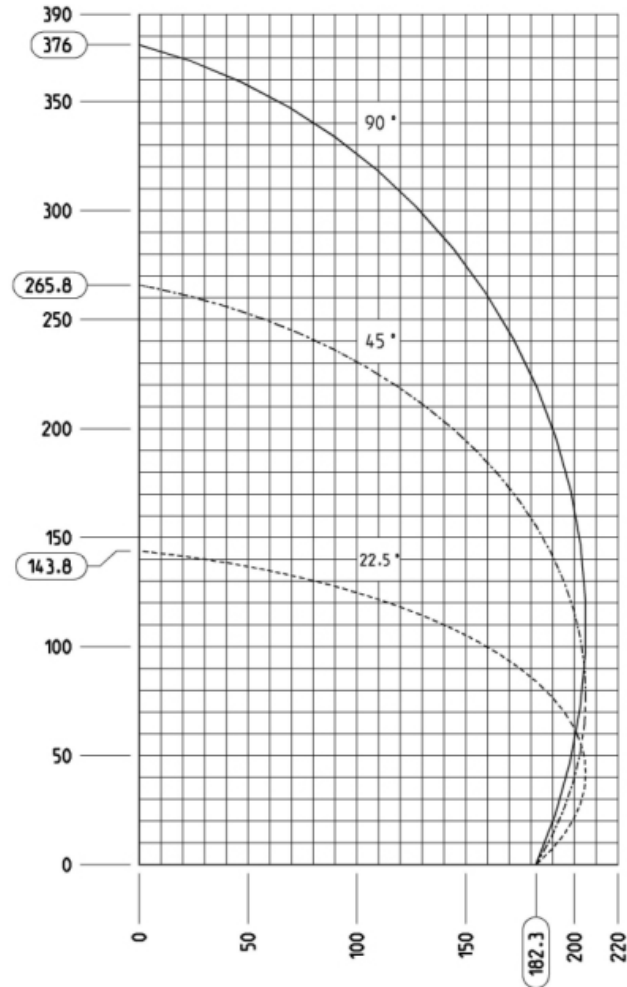
Kit for discharging chips in the collection box or swarf belt (OPTIONAL)

Blade motors, three-phase 3HP (2.2 Kw) - 2800 rpm. Euro voltage 230/400V- 50Hz; 275/480V - 60 Hz

# BLITZ ALVA 550

Double-head sawing machine with motorised movement of the mobile head and pneumatic tilting of the  $\varnothing$  550 mm heads

## Cutting diagram



## BLITZ ALVA 550

Double-head sawing machine with motorised movement of the mobile head and pneumatic tilting of the  $\varnothing$  550 mm heads

### Accessories supplied

N	Description
2	Tungsten carbide sawblade $\varnothing$ 550 mm
1	Integral safety kit around cutting zone
1	Mobile head roller table (3 mt.)
	Vertical (2) and horizontal (3) vices
	Microdrop tool lubrication
	Set up for forced extraction of chips and fumes
	<b>ProCut</b> Software licence (only for E version)

## BLITZ ALVA 550

Double-head sawing machine with motorised movement of the mobile head and pneumatic tilting of the ø 550 mm heads

Description	550 A	550 C	550 E
Additional charge for special voltage and cycles (Standard motor: 230/(380÷480)V three-phase 50/60 Hz and 110/230V single-phase 50/60Hz)	X	X	X
External transformer kit for machines with non standard Infeed area (for machines already manufactured)	X	X	X
Additional charge for UL-CSA version system (The additional charge includes the plant with cables and special components/measurement unit in inches)	X	X	X
Additional charge for electrical cabinet cooling system	X	X	X
Profile clamp (specify type of profile when ordering) x 3	X	X	X
Supplementary horizontal vice kit	X	X	X
Roller table with vertical rollers, 3m, <b>Fixed head</b>	X	X	X
Roller table with vertical rollers, 4.2m, <b>Fixed head</b>	X	X	X
Retractable pneumatic intermediate profile support. (Q.ty 1) State whether to be positioned as 1st or 2nd support	X	X	X
Retractable external profile support kit (Left) for machine with 4-5 m working cut (floor fixing outside machine)	X	X	X
Retractable external profile support (Left) for 6.6 m machine	X	X	X
Additional charge for profile height measuring device	X	X	X
Cutting lubrication by atomiser	X	X	X
Profile raising roller kit	X	X	X
Software licence for program for special length cuts (over and under size and super undersize) and 45° trim cut	X	X	X
Software licence for program for step-by-step cutting, with photocell safety barrier <b>Note: it is compulsory to by the additional horizontal vice</b>	N.D	X	X
Software licence for program for step-by-step cutting with two-handed command <b>Note: it is compulsory to by the additional horizontal vice</b>	X	X	X

N.D. → not available

## BLITZ ALVA 550

Double-head sawing machine with motorised movement of the mobile head and pneumatic tilting of the  $\varnothing$  550 mm heads

Description	550 A	550 C	550 E
Software licence for “Work” program (Including course) Note: relative archives necessary; see software list	N.D	N.D	<input checked="" type="checkbox"/>
Kit for list transmission via Ethernet for online connection to external devices and online assistance	<input checked="" type="checkbox"/>	<input checked="" type="checkbox"/>	<input checked="" type="checkbox"/>
Software licence for program for viewing cross-sections in DXF format	<input checked="" type="checkbox"/>	<input checked="" type="checkbox"/>	<input checked="" type="checkbox"/>
Software licence for program for viewing frame with the profile being machined highlighted	<input checked="" type="checkbox"/>	<input checked="" type="checkbox"/>	<input checked="" type="checkbox"/>
Activation of online assistance for one user	<input checked="" type="checkbox"/>	<input checked="" type="checkbox"/>	<input checked="" type="checkbox"/>
Label printer (including 1 reel of labels)	<input checked="" type="checkbox"/>	<input checked="" type="checkbox"/>	<input checked="" type="checkbox"/>
Reel of labels; min n. 10 pcs (58x35 mm)	<input checked="" type="checkbox"/>	<input checked="" type="checkbox"/>	<input checked="" type="checkbox"/>
Reel of labels; min n. 10 pcs (100x36 mm)	<input checked="" type="checkbox"/>	<input checked="" type="checkbox"/>	<input checked="" type="checkbox"/>

N.D. → not available

## BLITZ ALVA 550

Double-head sawing machine with motorised movement of the mobile head and pneumatic tilting of the  $\varnothing$  550 mm heads

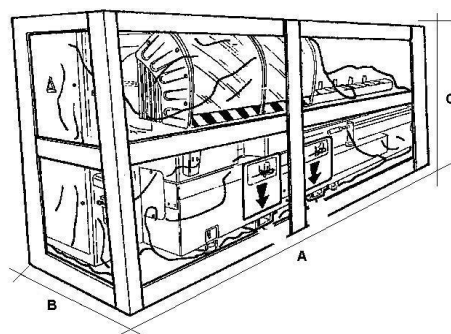
### Optional accessories

Description	550 A	550 C	550 E
Chips conveyor belt 4000 mm	X	X	X
Chips conveyor belt 5000 mm	X	X	X
Chips conveyor belt 6600 mm	X	X	X
Rear chips conveyor belt 4000 mm	X	X	X
Rear chips conveyor belt 5000 mm	X	X	X
Rear chips conveyor belt 6600 mm	X	X	X
Kit for conveying chips in centre of machine (For non CZ version, cannot be used with rear belt)	X	X	X
Angled conveyor belt	X	X	X

## BLITZ ALVA 550

Double-head sawing machine with motorised movement of the mobile head and pneumatic tilting of the  $\varnothing$  550 mm heads

Description	550 A	550 C	550 E
Packed in a 4 m crate	X	X	X
Packed in a 5 m crate	X	X	X
Packed in a 6,6 m crate	X	X	X



Working cut	A (mm)	B (mm)	C (mm)	KG
m. 4	6500	1700	1800	1820
m. 5	7530	1700	1800	2150
m. 6,6	9090	1700	1800	2700



## BLITZ ALVA 550

Double-head sawing machine with motorised movement of the mobile head and pneumatic tilting of the  $\varnothing$  550 mm heads



The specifications and illustrations in this technical sheet are only guideline, FomIndustrie therefore reserves the right to make any modifications it deems necessary for technical or commercial reasons at any time and without prior notification.